

# Seeeduino Stalker 3.0: Fixing the hardware bugs of Bee connection

2016-06-21, V002, RB

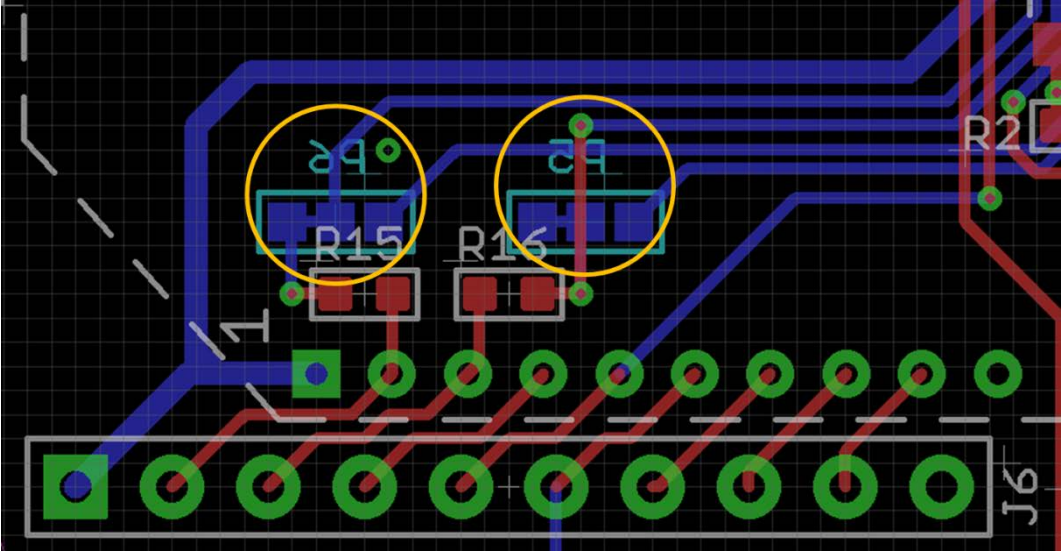


Figure 1: The two solder jumpers of concern, P5, P6.

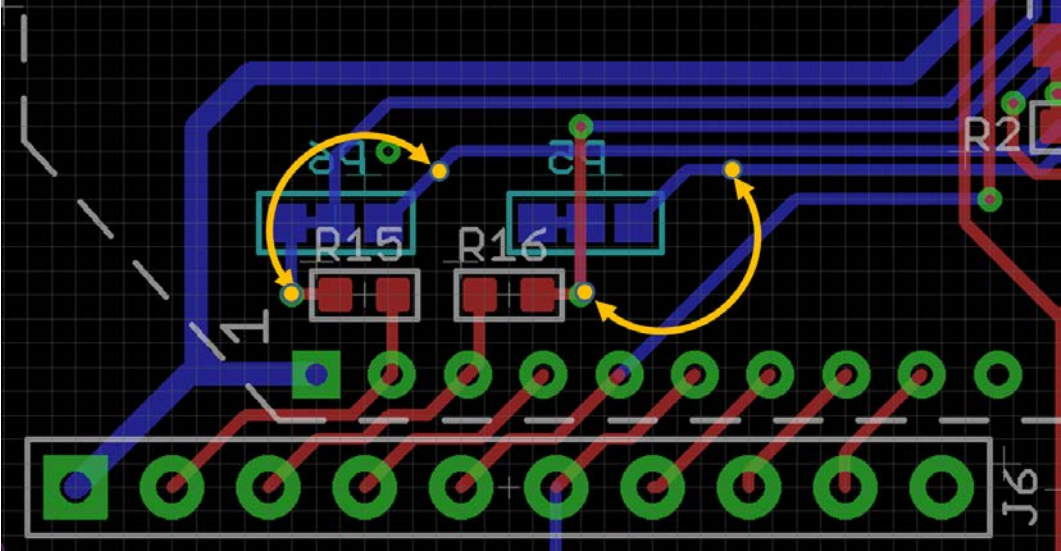


Figure 2: These connections have to be established. There is a vertical blue conducting trace on bottom under the vertical red conducting trace on top connecting the right pad of R16 to the middle pad of solder jumper P5.

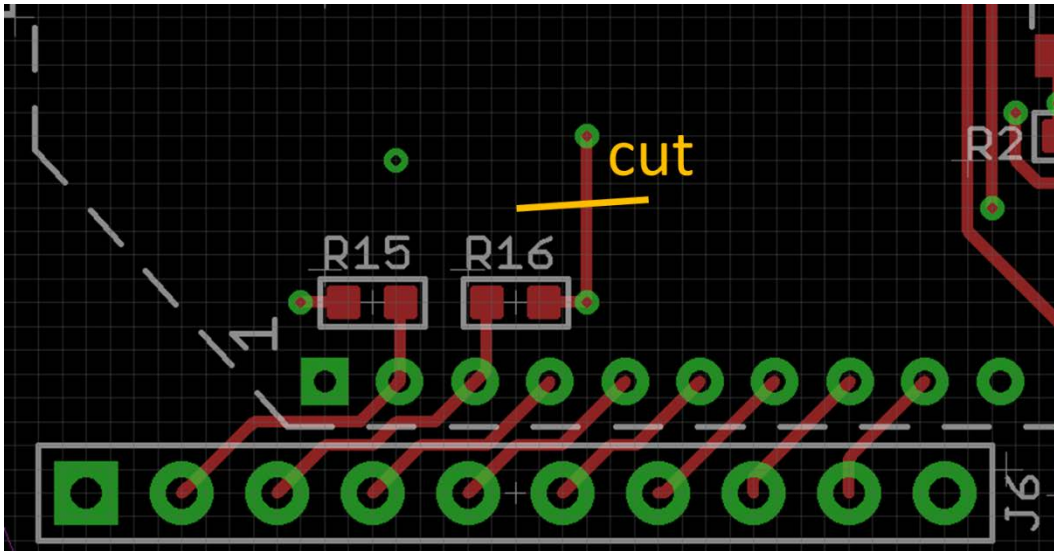


Figure 3: Cut conducting trace on top side.

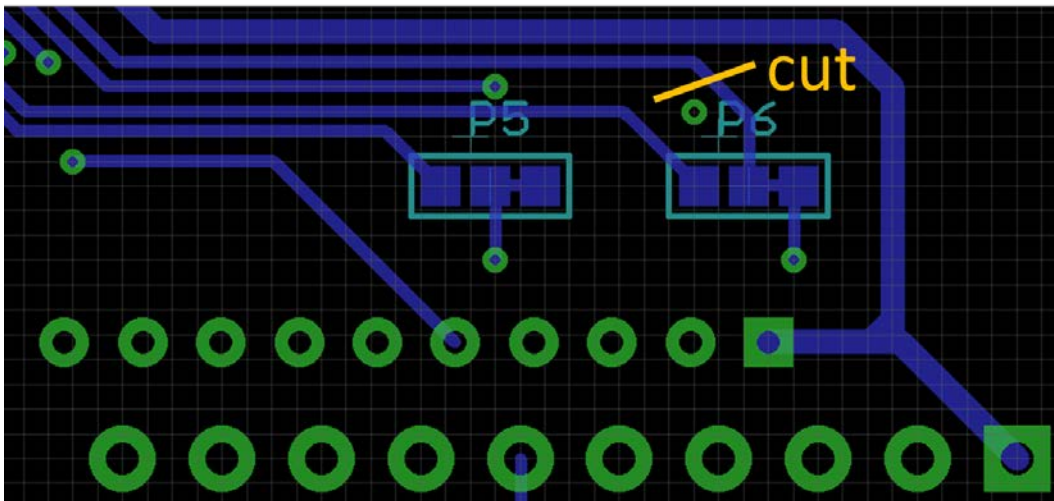


Figure 4: Cut conducting trace on bottom side.

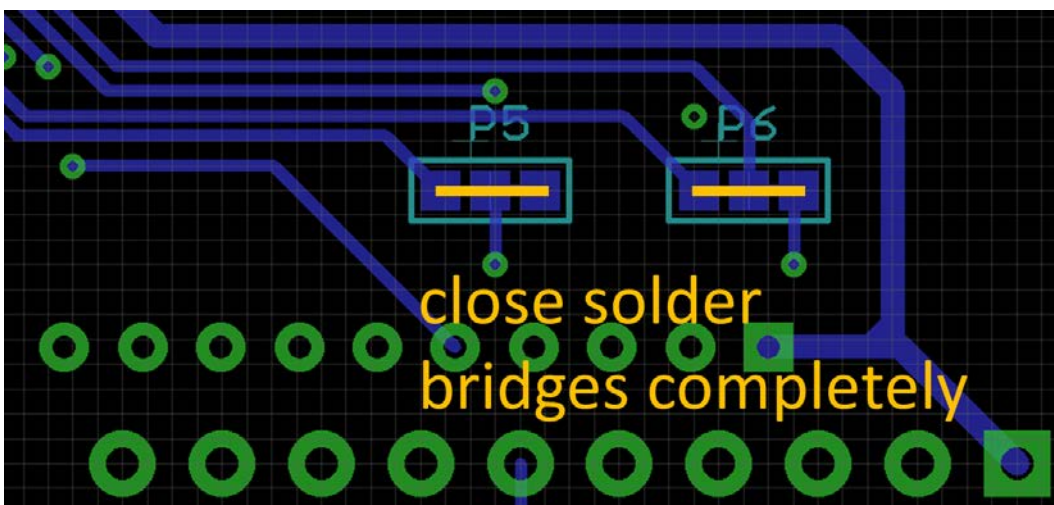


Figure 5: Close solder jumpers P5 and P6 completely. Connect all adjacent pads.